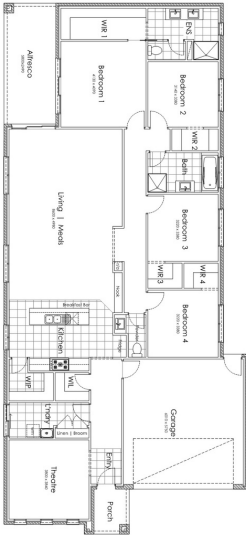


BAXTER 28



BAXTER 28 AS DISPLAYED \$341,740

| | |
|-----------------|--------------|
| Ground Floor | 208.5 |
| Garage | 37.6 |
| Porch | 4.0 |
| Alfresco | 14.4 |
| Total | 264.5 |
| Width | 11.73 |
| Length | 25.48 |
| Waterman facade | |

MINIMUM LOT SIZE 12.93 X 32

b BEVNOL
HOMES

9786 6277

www.bevnol.com.au

CDB-U 49004

Images are indicative only & for illustration purposes.
Front facade is an optional upgrade, landscaping & furniture not included

DELUXE FEATURES



20mm polished edge Smart Stone benchtops to the kitchen



Colorbond panel lift garage door with remote



Up to Category 3 bricks from Austral Bricks



Up to 14 LED downlights to living areas



900mm stainless steel freestanding oven and undermount rangehood



Stainless steel dishwasher



1200 x 900mm shower to ensuite (plan specific)



Double vanities to ensuites (plan specific)



Hand held showers on rails to all showers



\$400 feature tile allowance



Up to category 2 carpet



Feature hinged entry door with glass infills



9786 6277

www.bevnol.com.au

CDB-U 49004