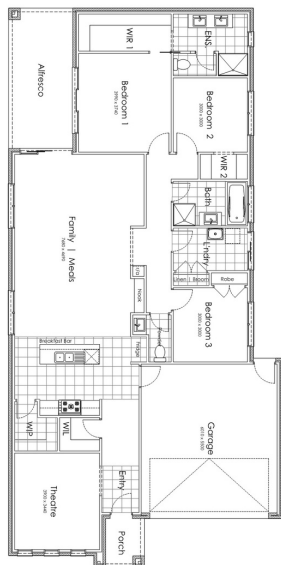
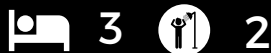


# BAXTER 23



## BAXTER 23

Ground Floor	167.12
Garage	36.1
Porch	3.33
Alfresco	14.68
<b>Total</b>	<b>221.23</b>
Width	11.00
Length	22.61

Elwood 3 facade

MINIMUM LOT SIZE 12.5 X 30

**b** BEVNOL  
HOMES

9786 6277

[www.bevnol.com.au](http://www.bevnol.com.au)

CDB-U 49004

Images are indicative only & for illustration purposes.  
Front facade is an optional upgrade, landscaping & furniture not included

# DELUXE FEATURES



20mm polished edge Smart Stone benchtops to the kitchen



Colorbond panel lift garage door with remote



Up to Category 3 bricks from Austral Bricks



Up to 14 LED downlights to living areas



900mm stainless steel freestanding oven and undermount rangehood



Stainless steel dishwasher



1200 x 900mm shower to ensuite (plan specific)



Double vanities to ensuites (plan specific)



Hand held showers on rails to all showers



\$400 feature tile allowance



Up to category 2 carpet



Feature hinged entry door with glass infills



9786 6277

[www.bevnol.com.au](http://www.bevnol.com.au)

CDB-U 49004